



Local Enterprise Office  
**LOUTH**

# READY TO...

**START-UP**

**FINANCE**

**IMPROVE**

**GROW**

**EXPAND**

**ACHIEVE**

## TAKE THE ROAD TO BUSINESS SUCCESS:

Your **Local Enterprise Office** is with you every step of your business journey!

FIND OUT MORE AT:  
**[LocalEnterprise.ie/Louth](http://LocalEnterprise.ie/Louth)**



In partnership with





# READY TO... START YOUR BUSINESS

## Business Advice Clinics

**to help develop your  
business idea**

You have an idea, but don't know where to start. Make an appointment in our Business Advice Clinic to talk it through with one of our Business Advisors. Explore the idea, get clarity and examine next steps.

→ [Discover more](#)

## Start Your Own Business Programme

The Start Your Own Business Programme is designed for people wishing to start their own business, or those who have recently started trading. It provides practical support, advice and guidance in a broad range of business areas to get you started.

→ [Discover more](#)

## Training and Mentoring

The Local Enterprise Offices provide an extensive range of high-quality training supports, which are tailored for start-up and growing businesses. Visit the Training and Events page for details of training available throughout the year.

→ [Discover more](#)

In some circumstances, new business owners can be eligible for a **Feasibility Study Grant** to assist in researching market demand for a product or service and examining its sustainability. See "Ready To ... Finance your business" for more information.



**ALWAYS  
AVAILABLE**

**MENTORING, TRAINING  
& BUSINESS ADVICE**



**READY TO...  
GROW YOUR  
BUSINESS**

**Business Advice  
Clinics**

Local Enterprise Office Louth has a range of business advisory supports, from Finance to Marketing, Sales to Strategy and everything in between. Call us on **042 933 5457** or email **info@leo.louthcoco.ie** today to book an appointment in our Business Advice Clinic.

**Mentoring**

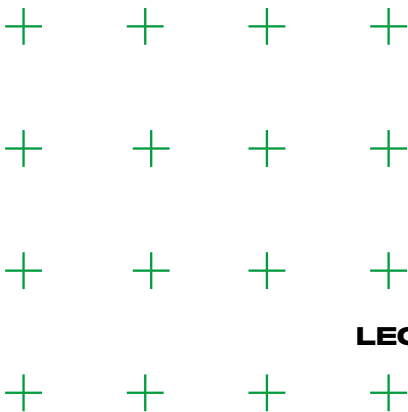
Mentoring matches up the knowledge, skills and insights of experienced business practitioners with small business owners who need practical and strategic one-to-one advice and guidance. Mentors contribute independent, informed observation and advice to aid decision making.

→ Discover more

**E-commerce and  
online sales and  
marketing**

The Trading Online Voucher scheme helps local businesses to develop a presence online. It is open to businesses trading for more than 6 months, employing 10 people or less and with turnover of under €2 million per annum. Vouchers are available to a maximum value of €2,500 or 50% of eligible expenditure and can be used for IT Consultation, development of an e-commerce website, software, online advertising, digital marketing strategy etc.

→ Discover more



## Management Development

### - to build your entrepreneurial and business skills

Developing your business skills is an essential part of growing a successful business. No one knows it all. Local Enterprise Office Louth offers a range of management development training programmes to support your development alongside your business.

→ Discover more

## Financial Capability Development

This really practical and highly effective course has been designed to assist business owners to improve their understanding of their business' finances and to understand how financial information can be used to make strategic business decisions.

→ Discover more

## New Frontiers

New Frontiers is Enterprise Ireland's national entrepreneur development programme for innovative, early-stage startups. The Regional Development Centre at DkIT is home to this programme in the North-East. Each year, New Frontiers funds 150 companies. If you believe that you are capable of building a sustainable new business, trading internationally, creating employment and generating revenue in your locality, apply now for a place on Ireland's largest entrepreneur development programme.

→ Apply Now

## You're The Business Digitalisation Training Programme

A partnership between Local Enterprise Offices, Enterprise Ireland and Google, the "You're The Business" programme aims to accelerate Irish SME growth through

digitalisation. This free, online training scheme gives entrepreneurs access to live and on-demand training sessions, geared towards supporting companies at all stages of their digitalisation journey, including those at early stages right through to those more digitally-sophisticated businesses who are ready to export globally. The training consists of 3 modules to help you understand how to use digital platforms to get online, grow online and expand internationally.

→ Discover more

## Sectoral Supports:

Talk to us about the sectoral supports offered by Local Enterprise Office Louth:

**Craft** Training and development supports for the craft sector are available throughout the year. Each year Local Enterprise Office Louth provides an opportunity for a selection of local craft businesses to attend Showcase, an international trade buyers event, hosted in the RDS.

**Food** Louth and Meath are home to a host of talented and passionate food and drinks producers. Together they work under the brand name "Boyne Valley Flavours". Local Enterprise Office Louth offers a range of specialist supports for food businesses including Food Academy for Food Start-Ups and Food Business Management Development Programme.

**Clusters** From the North East Engineering Cluster to the M1 FinTech corridor, a series of clusters are in operation in the Louth and North East Region to help support and promote excellence in learning, development and enterprise.



**ALWAYS  
AVAILABLE**

**MENTORING, TRAINING  
& BUSINESS ADVICE**



## READY TO... IMPROVE YOUR BUSINESS

### **Drive efficiency and cost savings with Lean for Business**

Lean is about doing things quicker, better and saving costs. Lean strives to remove waste and to continually improve a company. Lean For Business is designed to encourage clients to adopt Lean business principles in their organisations to increase performance and competitiveness. Lean is for all companies, regardless of sector.

→ [Discover more](#)

### **Reduce the carbon footprint of your business with Green for Business**

This free programme helps small businesses take the first step towards becoming more sustainable. A green consultant will show you the small changes in your business that can have a big impact on your company - and the world around you.

→ [Discover more](#)

### **Energy Efficiency Grant**

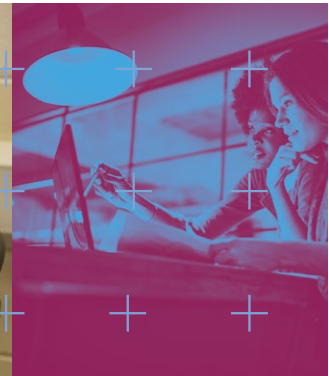
Once completing the Green For Business programme businesses can explore the Energy Efficiency Grant which can support investment in technologies and equipment to help reduce the carbon footprint of businesses with 75% of eligible costs.

→ [Discover more](#)

### **Use technology to improve business performance with Digital for Business**

Small businesses need to maximise every advantage - and implementing a digital strategy can give businesses a real edge. Digital for Business is a pilot initiative from the Local Enterprise Office designed to give Local Enterprise Office funded clients that digital edge. From optimising processes to delivering a seamless digital customer experience, the aim is to help businesses prepare and implement a plan for the adoption of digital tools and techniques across the business.

→ [Discover more](#)



## READY TO... FINANCE YOUR BUSINESS

### Feasibility Study Grant

Feasibility Study Grants are designed to assist with researching market demand for a product or service and examining its sustainability. The grant can be used for market research, consultancy, costs associated with development, innovation, prototypes or labour for research.

→ [Discover more](#)

### Priming Grant

A Priming Grant is a business start-up grant available to micro enterprises within the first 18 months of start-up. A Priming Grant may be paid to buy new equipment, help with direct business costs such as salary, rental costs, utilities, marketing, consultancy costs, etc.

→ [Discover more](#)

### Business Expansion Grant

This grant is designed to assist the businesses in a growth phase, after the initial 18 month start-up period. Depending on eligibility, grants are between €80,000 - €150,000 with 50% repayable. A Business Expansion Grant may be paid to buy new equipment, help with direct business costs such as salary, rental costs, utilities, marketing and consultancy costs but cannot not be used to buy a building, land or mobile assets.

→ [Discover more](#)

### Low interest business loans via Microfinance Ireland

Microfinance Ireland (MFI), is a not-for-profit lender, established to deliver the Government's Microenterprise Loan Fund. MFI works very closely with the Local Enterprise Offices (LEOs), providing low-interest loans of €2,000 to €25,000 to small businesses to assist start-up, growth and expansion. The team at the Local Enterprise Office can help with preparation of funding applications and a reduced interest rate is available to applications that are made via the Local Enterprise Office.

→ [Discover more](#)

## Other financial supports are available for companies with specialist needs:

### Unlock Overseas Market Opportunities with TAME

The Technical Assistance for Micro Exporters grant is available to help micro enterprises in Ireland unlock new overseas markets for their products and services, within Europe and beyond. This grant can cover up to 50% of qualifying expenditure, up to a maximum of €5,000 (exc. VAT).

→ [Discover more](#)

### Research, Development & Innovation Supports

Research, Development, and Innovation (RD&I) and the application of knowledge are critical drivers for the future success of Irish industry. The RD&I offers are designed to provide support for research, development, and technological innovation relevant at all stages of company development, and will enable companies to progress from undertaking an initial research project to high level Innovation and R&D activity. Eligible LEO Client Companies (sole traders are not eligible) can apply to the fund for support to develop new or improved product, services or processes.

→ [Discover more](#)

### Louth County Enterprise Fund “The Fund”

The Enterprise Fund was established in 1989 with seed capital provided by the International Fund for Ireland and donations from many Louth-based businesses. The purpose was to provide loan finance to entrepreneurs and small businesses that had difficulty securing funding from the established lending institutions. Since then, “The Fund” has supported some 500 entrepreneurs and businesses, across a broad range of sectors, many of whom were not eligible for State support. Some companies have stayed small, but others have grown to be significant employers. The outstanding feature of the Enterprise Fund’s structure is its ability to harness local knowledge and apply local intelligence and discretion to its decision making process. The Enterprise Fund offers business loans of up to €25,000 to approved entrepreneurs and enterprises. These loans are repaid over a 3 – 5 year period with a typical interest rate of 7%.

→ [Discover more](#)



**ALWAYS  
AVAILABLE  
MENTORING, TRAINING  
& BUSINESS ADVICE**



## READY TO... EXPAND YOUR BUSINESS

Supports may be available to help your business if you are ready to take the next step and expand your business into international markets. Contact LEO Louth to see how we can assist you.

### Graduate to Enterprise Ireland to support your Global Ambition

Typically, the Local Enterprise Office provides support for micro-enterprises and small businesses with less than ten employees. We provide a range of services such as training, mentoring, and financial assistance to help businesses start and grow.

Some client companies have potential to scale and expand internationally. If that's your business, the Local Enterprise Office, our advisors and mentors, will work with you to help prepare for that transition to Enterprise Ireland.

Enterprise Ireland provide funding, advice, and support to help these businesses develop new products, enter new markets, and increase their sales and profits.

They work with businesses that have a strong track record of innovation and are ambitious for international growth.



**ALWAYS  
AVAILABLE**

**MENTORING, TRAINING  
& BUSINESS ADVICE**

→ [Discover more](#)



Local Enterprise Office  
**LOUTH**

Local Enterprise Office Louth  
Town Hall, Crowe St, Dundalk, Co. Louth.

☎ 042 933 5457

✉ [info@leo.louthcoco.ie](mailto:info@leo.louthcoco.ie)

📍 [localenterprise.ie/Louth](http://localenterprise.ie/Louth)



In partnership with

